

Coaxial Bandpass Filter

ZABP-587-S+

50Ω 470 to 705 MHz

The Big Deal

- High rejection
- Good VSWR
- Connectorized package



Generic photo used for illustration purposes only
CASE STYLE: UU1842

Product Overview

ZABP-587-S+ is a 50Ω bandpass filter with a rugged connectorized package covering the passband of 470 to 705 MHz. The bandpass filter offers good matching within the passband and provides high rejection. This filter has miniature high Q capacitors and wire welded inductors for high reliability. It has repeatable performance across lots and consistent performance across temperature.

Key Features

Feature	Advantages
High rejection	ZABP-587-S+ has sharper transition and rejects spurious signals in the stopband.
Good VSWR	This filter maintains typical VSWR over passband frequency range making this filter easier to integrate into receiver and transmitter RF chains with less concerns for in band frequency ripple.
Connectorized package	Connectorized package is easy to interface with other devices and well suited for test setups.

Notes

- A. Performance and quality attributes and conditions not expressly stated in this specification document are intended to be excluded and do not form a part of this specification document.
B. Electrical specifications and performance data contained in this specification document are based on Mini-Circuit's applicable established test performance criteria and measurement instructions.
C. The parts covered by this specification document are subject to Mini-Circuits standard limited warranty and terms and conditions (collectively, "Standard Terms"); Purchasers of this part are entitled to the rights and benefits contained therein. For a full statement of the Standard Terms and the exclusive rights and remedies thereunder, please visit Mini-Circuits' website at www.minicircuits.com/MCLStore/terms.jsp



Bandpass Filter

ZABP-587-S+

50Ω 470 to 705 MHz



Generic photo used for illustration purposes only

CASE STYLE: UU1842
Connectors SMA-MF Model ZABP-587-S+

Features

- High rejection
- Good VSWR
- Connectorized package

Applications

- Harmonic rejection
- Transmitters / receivers
- TV Broadcasting / HDTV
- Test equipment

Electrical Specifications at 25°C

Parameter	F#	Frequency (MHz)	Min.	Typ.	Max.	Unit
Pass Band	Center Frequency	-	-	587	-	MHz
	Insertion Loss	F1-F2	470-705	1.8	2.5	dB
	VSWR	F1-F2	470-705	1.7	1.9	:1
Stop Band, Lower	Insertion Loss	DC-F3	DC - 200	50	55	dB
		F3-F4	200-400	25	31	dB
	VSWR	DC-F4	DC - 400	-	20	:1
Stop Band, Upper	Insertion Loss	F5-F6	800-850	20	25	dB
		F6-F7	850-1500	-	25	dB
	VSWR	F5-F7	800-1500	-	20	:1

Maximum Ratings

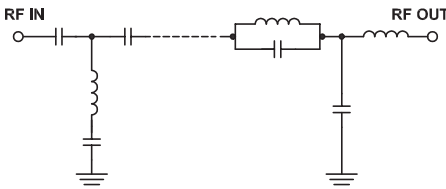
Operating Temperature	-40°C to 85°C
Storage Temperature	-55°C to 100°C
RF Power Input	1 W max.

Permanent damage may occur if any of these limits are exceeded.

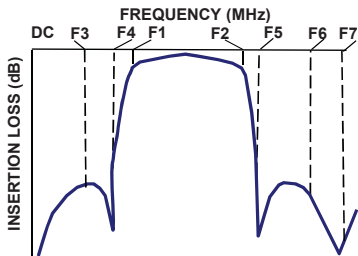
Typical Performance Data at 25°C

Frequency (MHz)	Insertion Loss (dB)	VSWR (:1)	Frequency (MHz)	Group Delay (ns)
1	97.42	12140.46	470	12.89
100	76.21	857.78	480	9.03
200	55.91	225.75	490	7.22
400	35.44	32.13	500	6.20
428	30.10	17.04	510	5.54
448	19.11	5.58	520	5.06
460	3.22	1.54	540	4.38
470	1.60	1.14	560	3.97
587	0.75	1.22	580	3.76
705	1.05	1.24	587	3.72
740	3.10	2.77	600	3.66
783	20.29	8.38	620	3.62
800	34.22	10.27	640	3.63
805	30.06	10.93	660	3.73
836	25.92	15.75	670	3.84
850	27.26	17.94	680	4.02
900	37.81	23.35	690	4.28
950	43.39	25.63	695	4.45
1000	35.03	26.35	700	4.65
1500	31.32	21.77	705	4.88

Functional Schematic

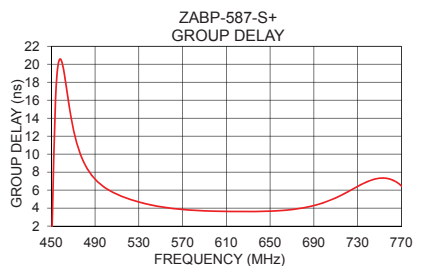
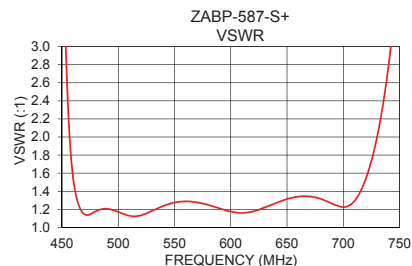
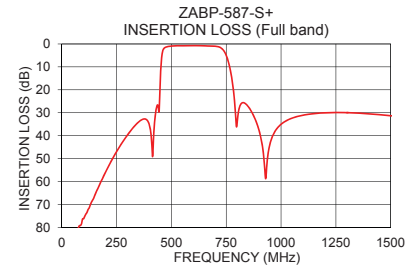
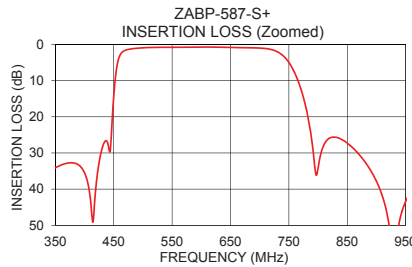


Typical Frequency Response



+RoHS Compliant

The +Suffix identifies RoHS Compliance. See our web site for RoHS Compliance methodologies and qualifications



Notes

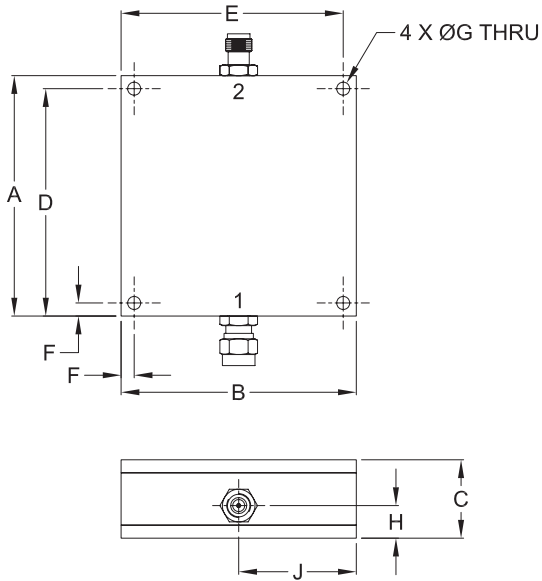
- Performance and quality attributes and conditions not expressly stated in this specification document are intended to be excluded and do not form a part of this specification document.
- Electrical specifications and performance data contained in this specification document are based on Mini-Circuits' applicable established test performance criteria and measurement instructions.
- The parts covered by this specification document are subject to Mini-Circuits standard limited warranty and terms and conditions (collectively, "Standard Terms"); Purchasers of this part are entitled to the rights and benefits contained therein. For a full statement of the Standard Terms and the exclusive rights and remedies thereunder, please visit Mini-Circuits' website at www.minicircuits.com/MCLStore/terms.jsp



Coaxial Connections

PORT - 1	SMA-MALE
PORT - 2	SMA-FEMALE

Outline Drawing



Outline Dimensions ($\frac{\text{inch}}{\text{mm}}$)

A	B	C	D	E
2.300	2.250	.750	2.175	2.125
58.42	57.15	19.05	55.25	53.98
F	G	H	J	wt.
.125	.125	.312	1.125	grams
3.18	3.18	7.93	28.58	124

Note: Please refer to case style drawing for details

Notes

- A. Performance and quality attributes and conditions not expressly stated in this specification document are intended to be excluded and do not form a part of this specification document.
- B. Electrical specifications and performance data contained in this specification document are based on Mini-Circuit's applicable established test performance criteria and measurement instructions.
- C. The parts covered by this specification document are subject to Mini-Circuits standard limited warranty and terms and conditions (collectively, "Standard Terms"); Purchasers of this part are entitled to the rights and benefits contained therein. For a full statement of the Standard Terms and the exclusive rights and remedies thereunder, please visit Mini-Circuits' website at www.minicircuits.com/MCLStore/terms.jsp

