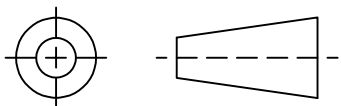


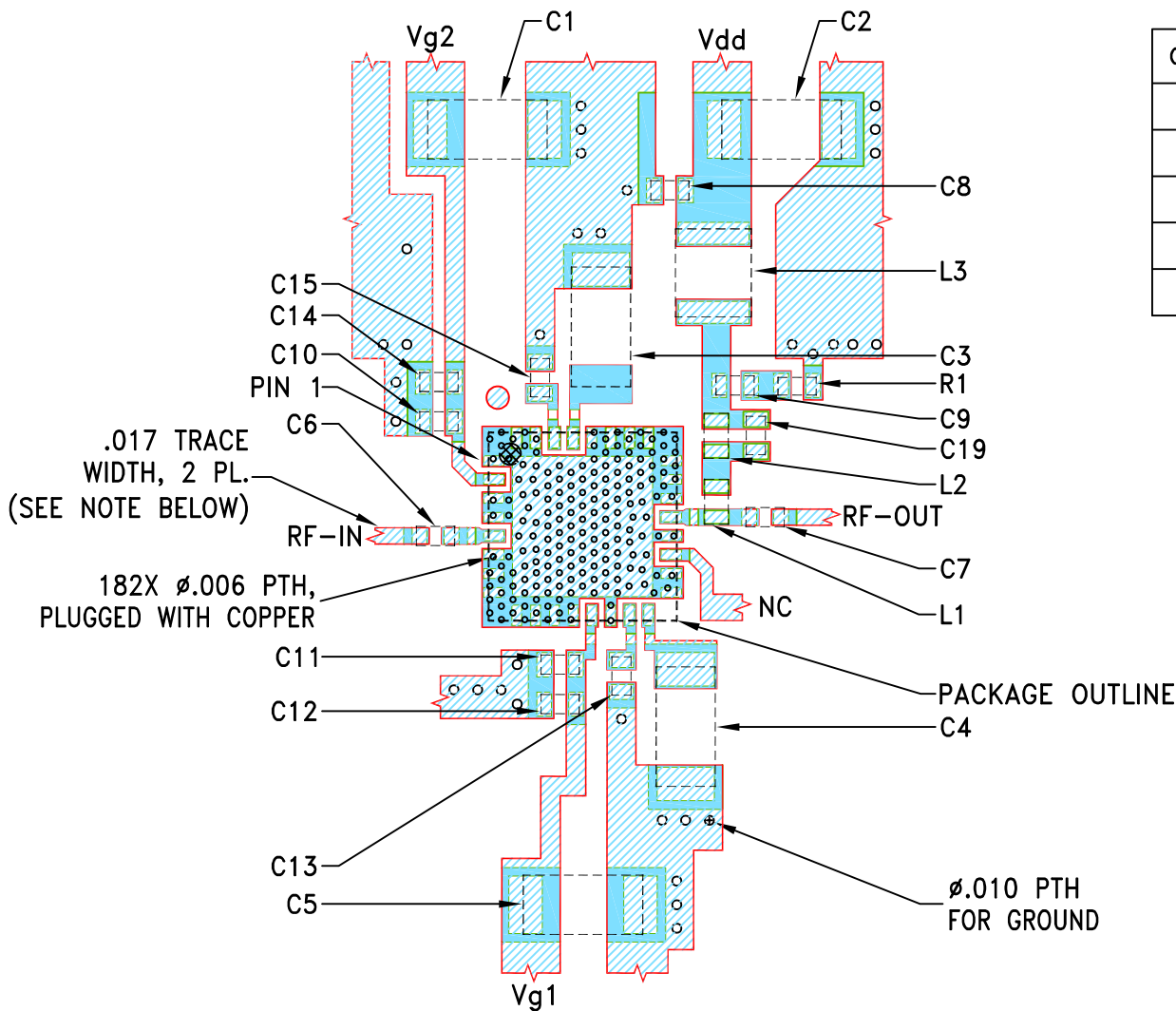
THIRD ANGLE PROJECTION



REVISIONS


REV	ECN No.	DESCRIPTION	DATE	DR	AUTH
OR	ECO-020020	NEW RELEASE	11/27/23	ITG	IL


SUGGESTED MOUNTING CONFIGURATION FOR DG1677-2 CASE STYLE



COMPONENT	SIZE
R1	0402
C1-C5	1206
C6-C15	0402
L1-L2	0402
L3	1008

- NOTES:**
- TRACE WIDTH IS SHOWN FOR ROGERS R04003C LoPro FOIL WITH DIELECTRIC THICKNESS .0087".
COPPER: 1 OZ. EACH SIDE. FINAL COPPER THICKNESS SHALL BE 2 OZ.
FOR OTHER MATERIALS TRACE WIDTH MAY NEED TO BE MODIFIED.
 - CHIP COMPONENT FOOT PRINTS SHOWN FOR REFERENCE, FOR COMPONENT VALUES REFER TO TB-PMA5-83-2WC+.
 - BOTTOM SIDE OF THE PCB IS CONTINUOUS GROUND PLANE.

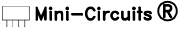
 DENOTES PCB COPPER LAYOUT WITH SMOBC (SOLDER MASK OVER BARE COPPER).

 DENOTES COPPER LAND PATTERN FREE OF SOLDER MASK.

UNLESS OTHERWISE SPECIFIED	INITIALS	DATE
DIMENSIONS ARE IN INCHES	ITG	11/27/23
TOLERANCES ON:	GF	11/27/23
2 PL DECIMALS ±	IL	11/27/23
3 PL DECIMALS ± .005		
ANGLES ±		
FRACTIONS ±		

 **Mini-Circuits®** 13 Neptune Avenue
Brooklyn NY 11235

PL, DG1677-2, TB-PMA5-83-2WC+

 Mini-Circuits®
THIS DOCUMENT AND ITS CONTENTS ARE THE PROPERTY OF MINI-CIRCUITS.
EXCEPT FOR USE EXPRESSLY GRANTED, IN WRITING, TO ITS VENDORS, VENDEE
AND THE UNITED STATES GOVERNMENT, MINI-CIRCUITS RESERVES ALL PROPRIETARY
DESIGN, USE, MANUFACTURING AND REPRODUCTION RIGHTS THERETO.
THESE CONTENTS SHALL NOT BE USED, DUPLICATED OR DISCLOSED TO ANY OUTSIDE
PARTY, IN WHOLE OR IN PART, WITHOUT WRITTEN PERMISSION OF MINI-CIRCUITS.

SIZE	CODE IDENT	DRAWING NO:	REV:
A	15542	98-PL-771	OR
FILE:	98PL771	SCALE:	SHEET:
		5:1	1 OF 1