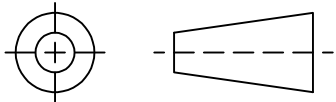


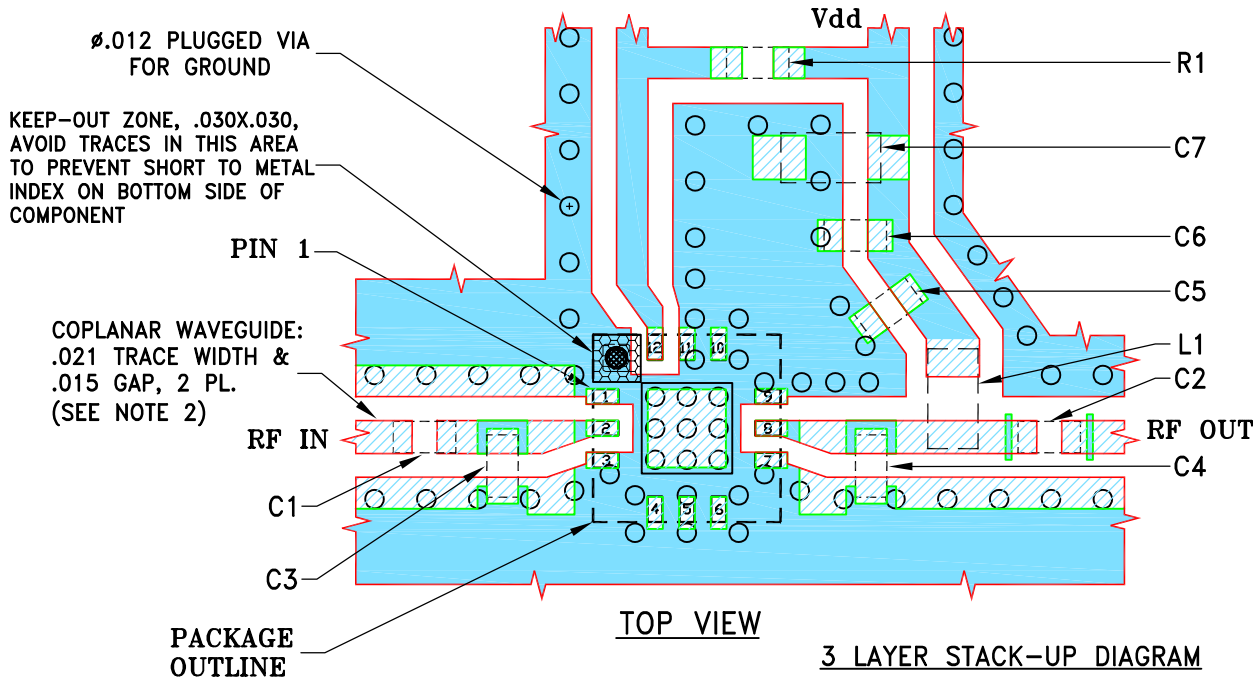
THIRD ANGLE PROJECTION



REVISIONS

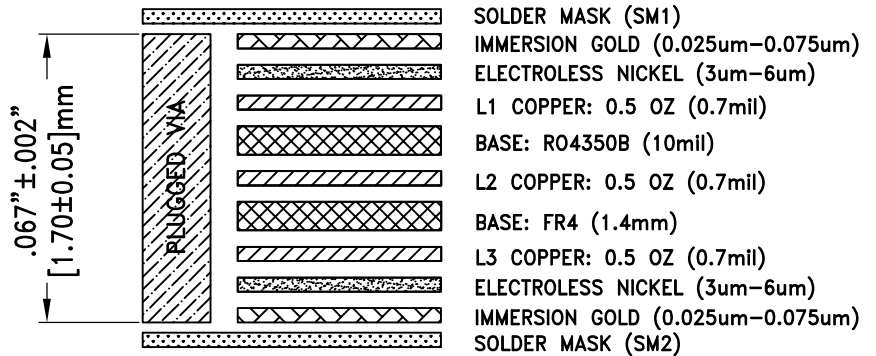
| REV | ECN No.    | DESCRIPTION   | DATE     | DR  | AUTH |
|-----|------------|---------------|----------|-----|------|
| OR  | ECO-018697 | NEW RELEASE   | 07/28/23 | ITG | IL   |
| A   | NPO-003730 | UPDATE TB P/N | 07/27/23 | IK  | CY   |
|     |            |               |          |     |      |

SUGGESTED MOUNTING CONFIGURATION FOR  
DQ1225 CASE STYLE



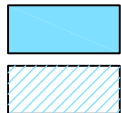
| COMPONENT | SIZE |
|-----------|------|
| C1...C6   | 0402 |
| C7,L1     | 0603 |
| R1        | 0402 |

3 LAYER STACK-UP DIAGRAM



NOTES:

1. PCB IS MULTILAYER PCB, SEE STACK-UP DIAGRAM.
2. TRACE WIDTH & GAP PARAMETERS ARE SHOWN FOR ROGERS R04350B WITH DIELECTRIC THICKNESS .010"±.001"; COPPER: 1/2 OZ. FOR OTHER MATERIALS TRACE WIDTH AND GAP MAY NEED TO BE MODIFIED.
3. CHIP COMPONENT FOOT PRINTS SHOWN FOR REFERENCE. FOR COMPONENT VALUES REFER TO TB-PMA3-83LP+.
4. COPPER LAYERS L2 & L3 OF THE PCB ARE CONTINUOUS GROUND PLANES.



DENOTES PCB COPPER LAYOUT WITH SMOBC (SOLDER MASK OVER BARE COPPER)

DENOTES COPPER LAND PATTERN FREE OF SOLDER MASK

| UNLESS OTHERWISE SPECIFIED | INITIALS |     | DATE     |
|----------------------------|----------|-----|----------|
|                            | DRAWN    | ITG | 07/28/23 |
|                            | CHECKED  | GF  | 07/28/23 |
|                            | APPROVED | IL  | 07/28/23 |

DIMENSIONS ARE IN INCHES

TOLERANCES ON:  
2 PL DECIMALS ±  
3 PL DECIMALS ± .005  
ANGLES ±  
FRACTIONS ±

Mini-Circuits® 13 Neptune Avenue  
Brooklyn NY 11235

PL, DQ1225, TB-PMA3-83LPC+

| SIZE            | CODE IDENT | DRAWING NO:   | REV: |
|-----------------|------------|---------------|------|
| A               | 15542      | 98-PL-757     | A    |
| FILE: 98-PL-757 | SCALE: 8:1 | SHEET: 1 OF 1 |      |

Mini-Circuits®

THIS DOCUMENT AND ITS CONTENTS ARE THE PROPERTY OF MINI-CIRCUITS. EXCEPT FOR USE EXPRESSLY GRANTED, IN WRITING, TO ITS VENDORS, VENDEE AND THE UNITED STATES GOVERNMENT, MINI-CIRCUITS RESERVES ALL PROPRIETARY DESIGN, USE, MANUFACTURING AND REPRODUCTION RIGHTS THERETO. THESE CONTENTS SHALL NOT BE USED, DUPLICATED OR DISCLOSED TO ANY OUTSIDE PARTY, IN WHOLE OR IN PART, WITHOUT WRITTEN PERMISSION OF MINI-CIRCUITS.