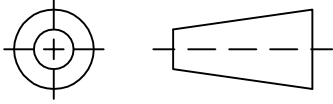


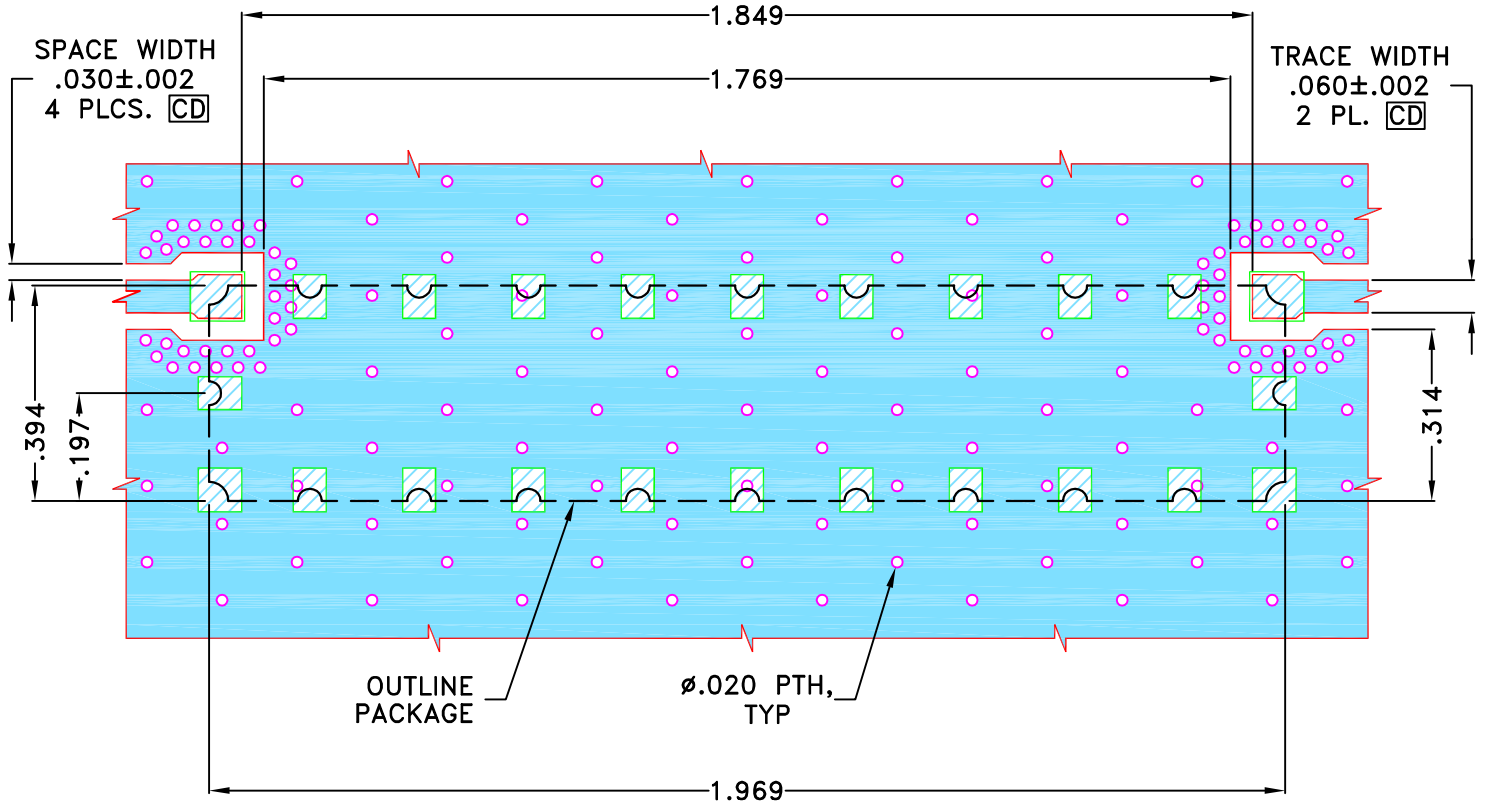
THIRD ANGLE PROJECTION



REVISIONS



REV	ECN No.	DESCRIPTION	DATE	DR	AUTH
OR	M169276	NEW RELEASE	AUG 18	TM	MD

SUGGESTED MOUNTING CONFIGURATION FOR SV2484 CASE STYLE "24FL03" PIN CODE



NOTES:

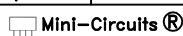
- TRACE WIDTH IS SHOWN FOR REOGERS (R04350B), WITH DIELECTRIC THICKNESS .030"±.002". COPPER: 1/2 Oz. EACH SIDE.
FOR OTHER MATERIALS TRACE WIDTH MAY NEED TO BE MODIFIED.
- BOTTOM SIDE OF THE PCB IS CONTINUOUS GROUND PLANE.

-  DENOTES PCB COPPER LAYOUT WITH SMOBC (SOLDER MASK OVER BARE COPPER)
-  DENOTES COPPER LAND PATTERN FREE OF SOLDERMASK

UNLESS OTHERWISE SPECIFIED	INITIALS	DATE
DIMENSIONS ARE IN INCHES	DRAWN TM	16 AUG 18
TOLERANCES ON:	CHECKED MD	16 AUG 18
2 PL DECIMALS ±	APPROVED KK	16 AUG 18
3 PL DECIMALS ± .005"		
ANGLES ±		
FRACTIONS ±		

 **Mini-Circuits®** 13 Neptune Avenue
Brooklyn NY 11235

PL, 24FL03, SV2484, CBP
TB-1069+, 50 Ohm

 Mini-Circuits® THIS DOCUMENT AND ITS CONTENTS ARE THE PROPERTY OF MINI-CIRCUITS. EXCEPT FOR USE EXPRESSLY GRANTED, IN WRITING, TO ITS VENDORS, VENDEE AND THE UNITED STATES GOVERNMENT, MINI-CIRCUITS RESERVES ALL PROPRIETARY DESIGN, USE, MANUFACTURING AND REPRODUCTION RIGHTS THERETO. THESE CONTENTS SHALL NOT BE USED, DUPLICATED OR DISCLOSED TO ANY OUTSIDE PARTY, IN WHOLE OR IN PART, WITHOUT WRITTEN PERMISSION OF MINI-CIRCUITS.		SIZE A	CODE IDENT 15542	DRAWING NO: 98-PL-604	REV: OR
ASHEETA1.DWG REV:A DATE:01/12/95		FILE: 98PL604	SCALE: 3:1	SHEET: 1 OF 1	