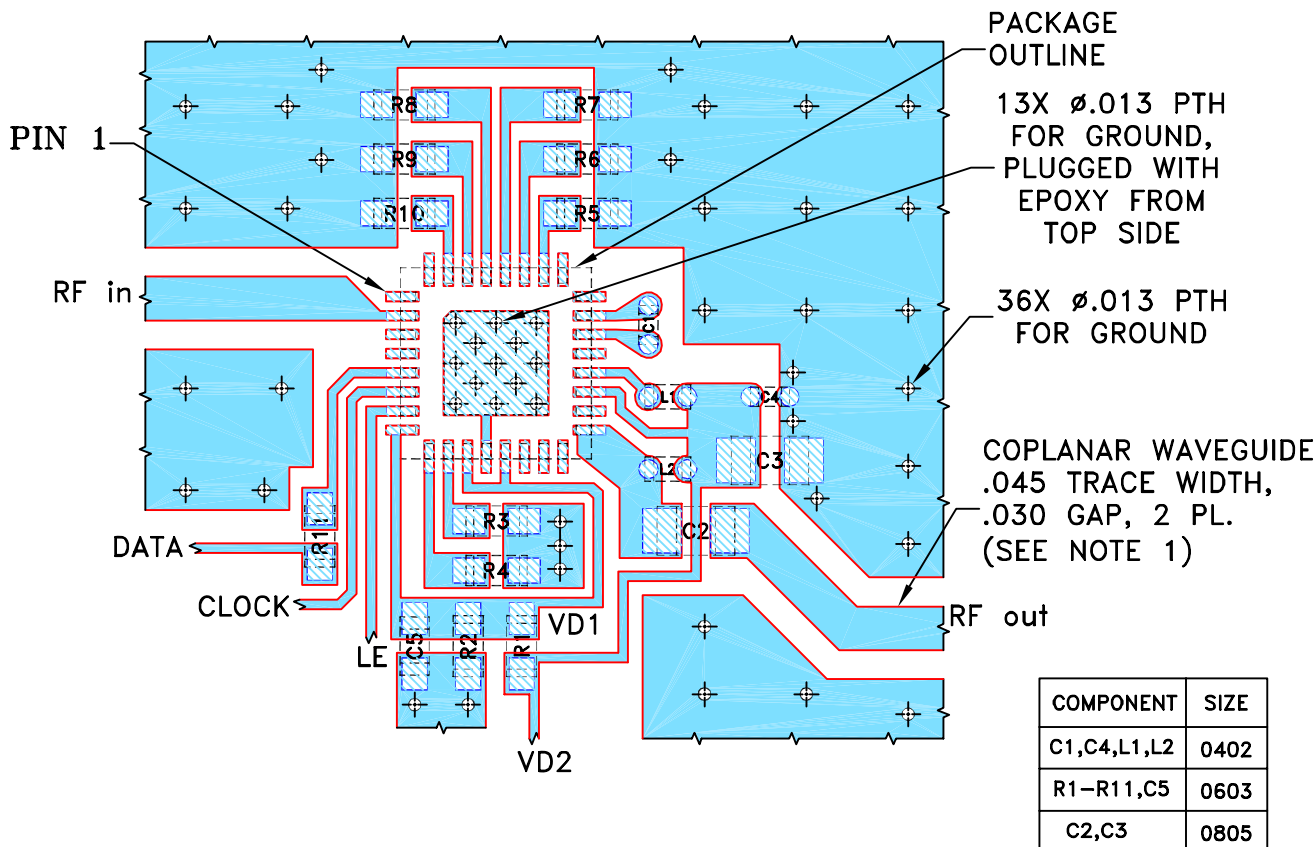


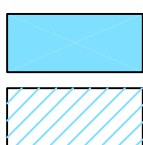
REVISIONS					
REV	ECN No.	DESCRIPTION	DATE	DR	AUTH
OR	M133785	NEW RELEASE	10/05/11	AV	SL

**SUGGESTED MOUNTING CONFIGURATION
FOR DG1677 CASE STYLE, "32AM01" PIN CODE**



NOTES:

1. COPLANAR WAVEGUIDE PARAMETERS ARE SHOWN FOR IT-180TC WITH DIELECTRIC THICKNESS $.024" \pm .002"$. COPPER: 1/2 OZ. EACH SIDE. FOR OTHER MATERIALS TRACE WIDTH AND GAP MAY NEED TO BE MODIFIED.
2. CHIP COMPONENT FOOT PRINTS SHOWN FOR REFERENCE. FOR COMPONENT VALUES REFER TO TB-643+.
3. BOTTOM SIDE OF THE PCB IS CONTINUOUS GROUND PLANE.



SOLID BLUE DENOTES PCB COPPER LAYOUT WITH SMOBC (SOLDER MASK OVER BARE COPPER).

HATCHED BLUE DENOTES COPPER LAND PATTERN FREE OF SOLDER MASK.

UNLESS OTHERWISE SPECIFIED	INITIALS	DATE
DRAWN	AV	09/28/11
CHECKED	PW	10/05/11
APPROVED	SL	10/05/11

Mini-Circuits® 13 Neptune Avenue
Brooklyn NY 11235

PL, 32AM01, DG1677, TB-643+

Mini-Circuits®
 THIS DOCUMENT AND ITS CONTENTS ARE THE PROPERTY OF MINI-CIRCUITS. EXCEPT FOR USE EXPRESSLY GRANTED, IN WRITING, TO ITS VENDORS, VENDEE AND THE UNITED STATES GOVERNMENT, MINI-CIRCUITS RESERVES ALL PROPRIETARY DESIGN, USE, MANUFACTURING AND REPRODUCTION RIGHTS THERETO. THESE CONTENTS SHALL NOT BE USED, DUPLICATED OR DISCLOSED TO ANY OUTSIDE PARTY, IN WHOLE OR IN PART, WITHOUT WRITTEN PERMISSION OF MINI-CIRCUITS.

SIZE	CODE IDENT	DRAWING NO:	REV:
A	15542	98-PL-355	OR
FILE:	98PL355	SCALE: 5:1	SHEET: 1 OF 1