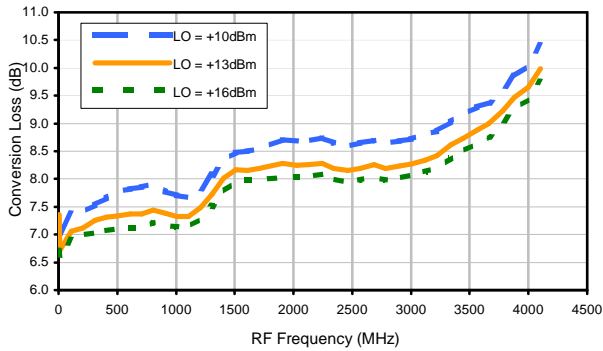


Frequency Mixer

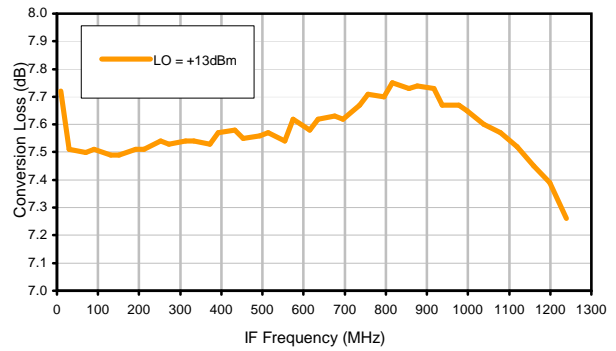
ADE-25MH+

Typical Performance Curves

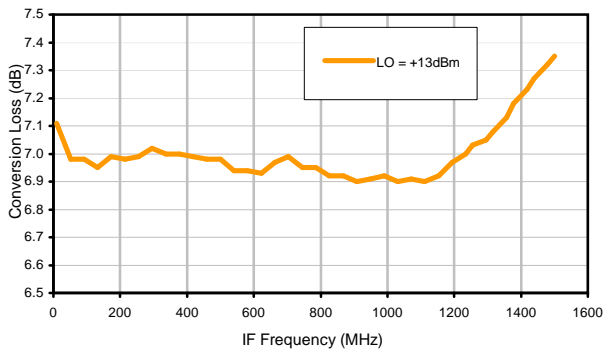
Conversion Loss @ IF=30MHz



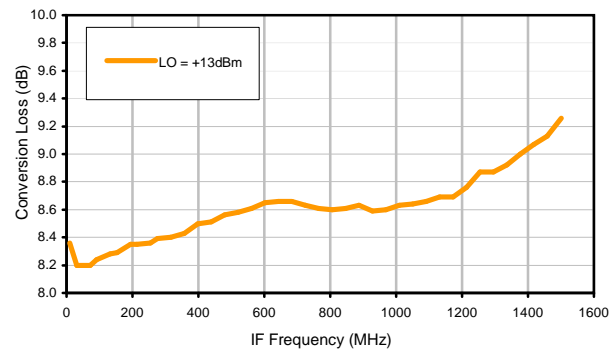
Conversion Loss vs. IF @ RF=1250MHz



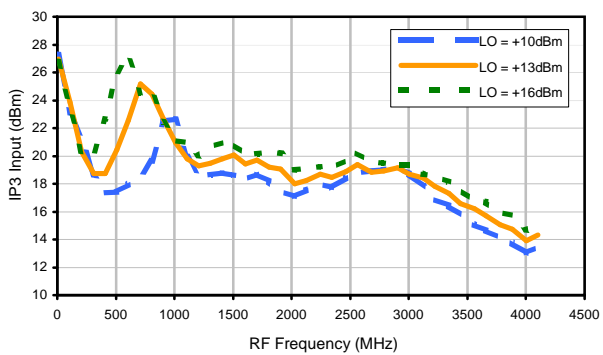
Conversion Loss vs. IF @ RF=10.1MHz



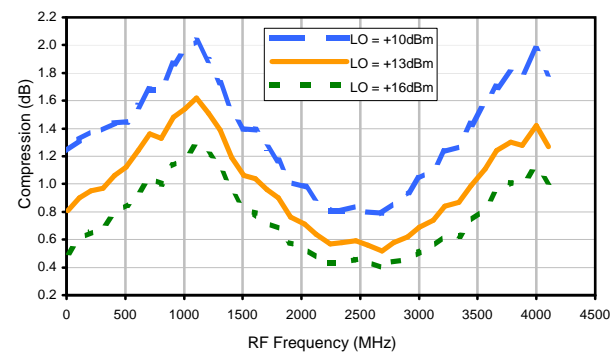
Conversion Loss vs. IF @ RF=2500.1MHz



IP3 Input

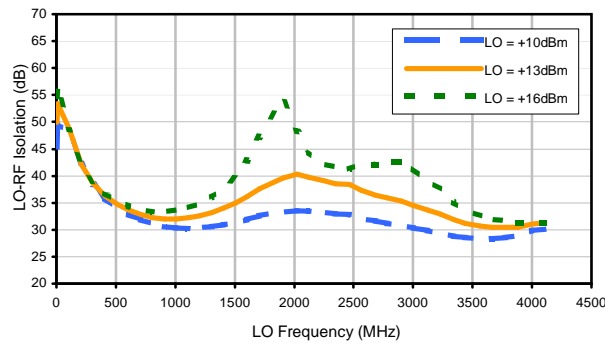


Compression @ RF IN=+9dBm

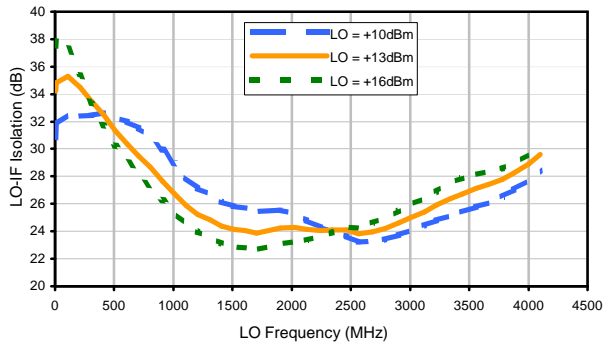


Typical Performance Curves

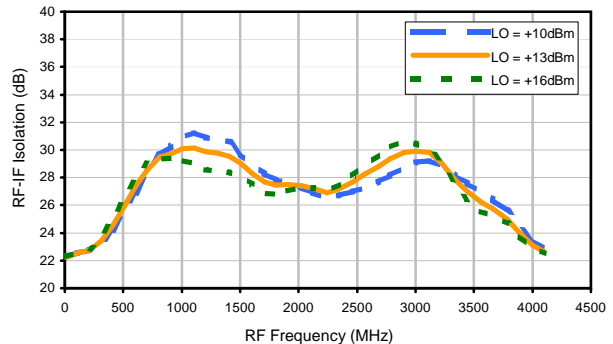
LO-RF Isolation



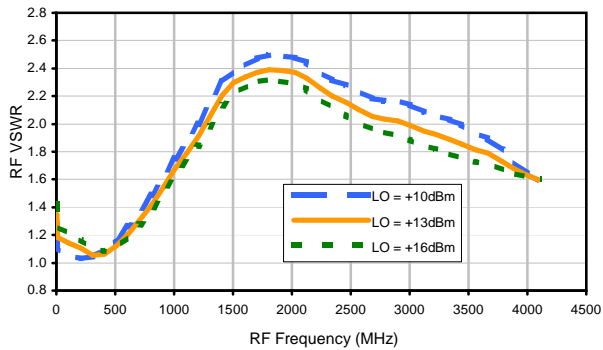
LO-IF Isolation



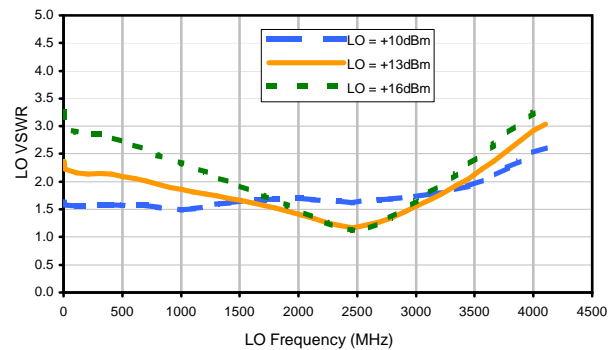
RF-IF Isolation



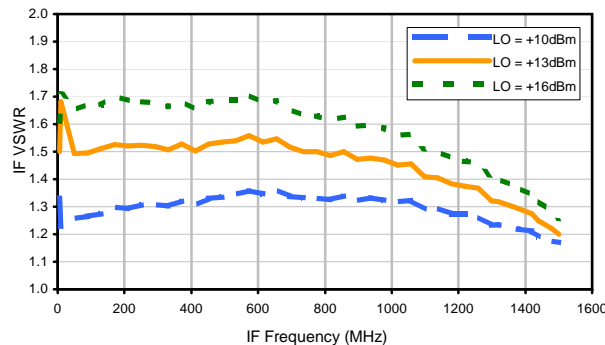
RF VSWR



LO VSWR



IF VSWR



Harmonics Tables

RF HARMONICS ORDER

| | (-dBm) | (-dBc) | | | | | | | | | | |
|----|--------|--------|-----|-----|-----|-----|-----|-----|-----|-----|-----|-----|
| 0 | - | - | +2 | 12 | 19 | 21 | 21 | 28 | 18 | 40 | 35 | 47 |
| 1 | - | 24 | +0 | 32 | 13 | 38 | 20 | 42 | 30 | 39 | 38 | 39 |
| 2 | 86 | 52 | 55 | 50 | 57 | 49 | 54 | 61 | 61 | 57 | 48 | 58 |
| 3 | >100 | 72 | 55 | 70 | 58 | 71 | 58 | 74 | 63 | 72 | 64 | 77 |
| 4 | >100 | >86 | >86 | 86 | >86 | 82 | >86 | 80 | >86 | >86 | >86 | 85 |
| 5 | >100 | >86 | >86 | >86 | >86 | >86 | >86 | >86 | >86 | >86 | >86 | >86 |
| 6 | >100 | >86 | >86 | >86 | >86 | >86 | >86 | >86 | >86 | >86 | >86 | >86 |
| 7 | >100 | >86 | >86 | >86 | >86 | >86 | >86 | >86 | >86 | >86 | >86 | >86 |
| 8 | >100 | >86 | >86 | >86 | >86 | >86 | >86 | >86 | >86 | >86 | >86 | >86 |
| 9 | >100 | >86 | >86 | >86 | >86 | >86 | >86 | >86 | >86 | >86 | >86 | >86 |
| 10 | >100 | >86 | >86 | >86 | >86 | >86 | >86 | >86 | >86 | >86 | >86 | >86 |
| | RF CAL | 0 | 1 | 2 | 3 | 4 | 5 | 6 | 7 | 8 | 9 | 10 |

LO HARMONICS ORDER

Test conditions: RF IN: 1250.1 MHz; -6.00 dBm.
 LO IN: 1280.01 MHz; +13.00 dBm
 IF OUT: 29.91 MHz; -13.56 dBm

RF HARMONICS ORDER

| | (-dBm) | (-dBc) | | | | | | | | | | |
|----|--------|--------|-----|-----|----|----|----|----|-----|-----|----|----|
| 0 | - | - | 7 | 22 | 31 | 34 | 33 | 45 | 32 | 61 | 54 | 67 |
| 1 | - | 23 | +0 | 31 | 14 | 39 | 21 | 45 | 32 | 45 | 43 | 49 |
| 2 | 70 | 45 | 46 | 54 | 44 | 45 | 43 | 51 | 51 | 64 | 42 | 55 |
| 3 | >100 | 49 | 36 | 50 | 41 | 59 | 40 | 56 | 51 | 58 | 70 | 55 |
| 4 | >100 | 49 | 66 | 52 | 60 | 53 | 63 | 53 | 63 | 60 | 65 | 65 |
| 5 | >100 | 54 | 49 | 62 | 54 | 68 | 51 | 59 | 53 | 64 | 59 | 59 |
| 6 | 87 | 64 | 66 | 65 | 70 | 83 | 77 | 76 | 81 | 68 | 72 | 67 |
| 7 | >100 | 79 | 68 | 68 | 70 | 73 | 71 | 69 | 73 | 76 | 66 | 73 |
| 8 | >100 | 95 | 80 | 77 | 80 | 74 | 86 | 79 | >96 | 72 | 89 | 72 |
| 9 | >100 | 88 | >96 | 83 | 80 | 86 | 82 | 84 | 85 | 79 | 76 | 76 |
| 10 | >100 | 96 | 92 | >96 | 89 | 92 | 95 | 90 | 90 | >96 | 89 | 83 |
| | RF CAL | 0 | 1 | 2 | 3 | 4 | 5 | 6 | 7 | 8 | 9 | 10 |

LO HARMONICS ORDER

Test conditions: RF IN: 1250.1 MHz; 4.00 dBm.
 LO IN: 1280.01 MHz; +13.00 dBm
 IF OUT: 29.91 MHz; -3.8 dBm

- Notes: 1. All Harmonics are in (dBc) relative to IF OUTPUT.
 2. + entry denotes harmonics are in (dBc) above IF OUTPUT.
 3. RF Cal represent the Harmonics level of the RF input signal to the mixer.

