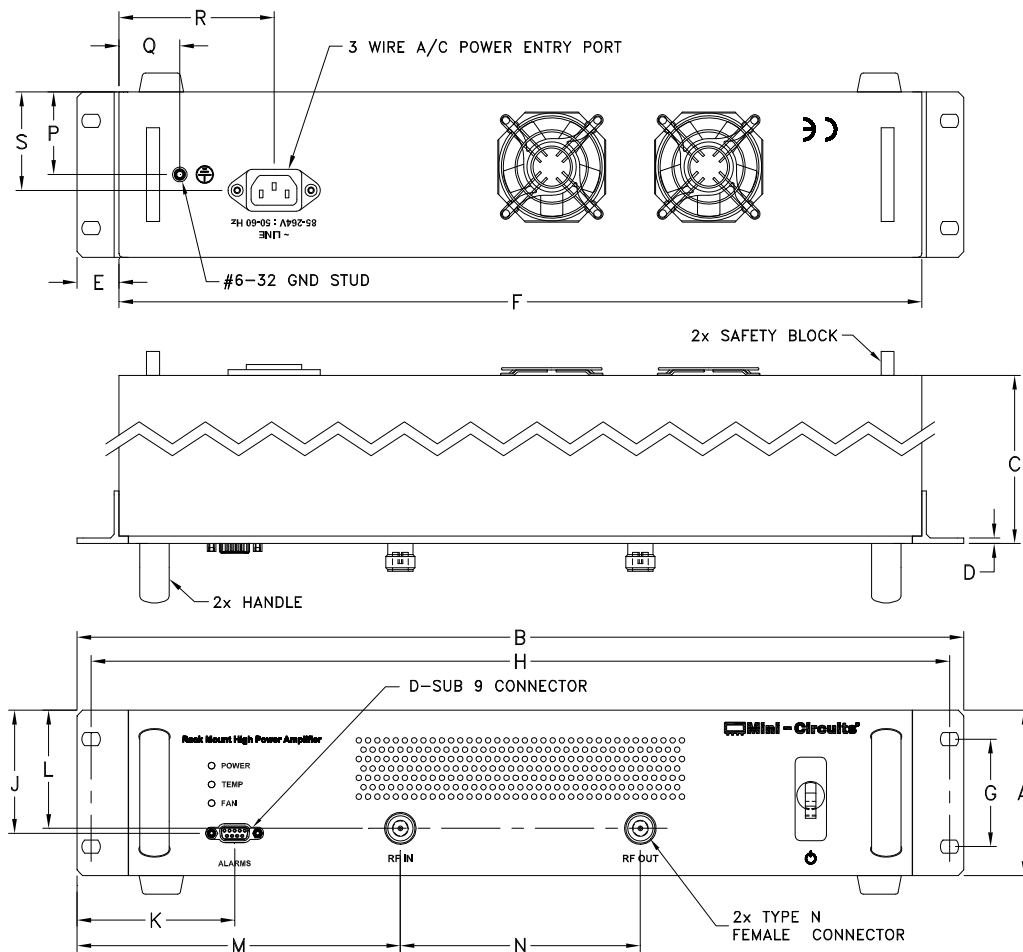


Outline Dimensions

NG1942-1



CASE #	A	B	C	D	E	F	G	H	J	K	L
NG1942-1	3.46 (88.0)	18.91 (480.4)	20.2 (513.0)	.12 (3.0)	.89 (22.7)	17.13 (435.0)	2.25 (57.2)	18.31 (465.0)	2.58 (65.5)	3.36 (85.4)	2.48 (62.9)

CASE #	M	N	P	Q	R	S	T	WT, GRAMS
NG1942-1	6.90 (175.2)	5.12 (130.0)	1.73 (44.0)	1.30 (33.0)	3.31 (84.1)	2.06 (52.4)	-- --	13910

Dimensions are in inches (mm). Tolerances: 2Pl. $\pm .03$; 3Pl. $\pm .015$

Note:

- Case material: Aluminum alloy.
- Finish: Powder coating, Color: White.



INTERNET <http://www.minicircuits.com>

P.O. Box 350166, Brooklyn, New York 11235-0003 (718) 934-4500 Fax (718) 332-4661

Distribution Centers NORTH AMERICA 800-654-7949 • 417-335-5935 • Fax 417-335-5945 • EUROPE 44-1252-832600 • Fax 44-1252-837010

Mini-Circuits ISO 9001 & ISO 14001 Certified