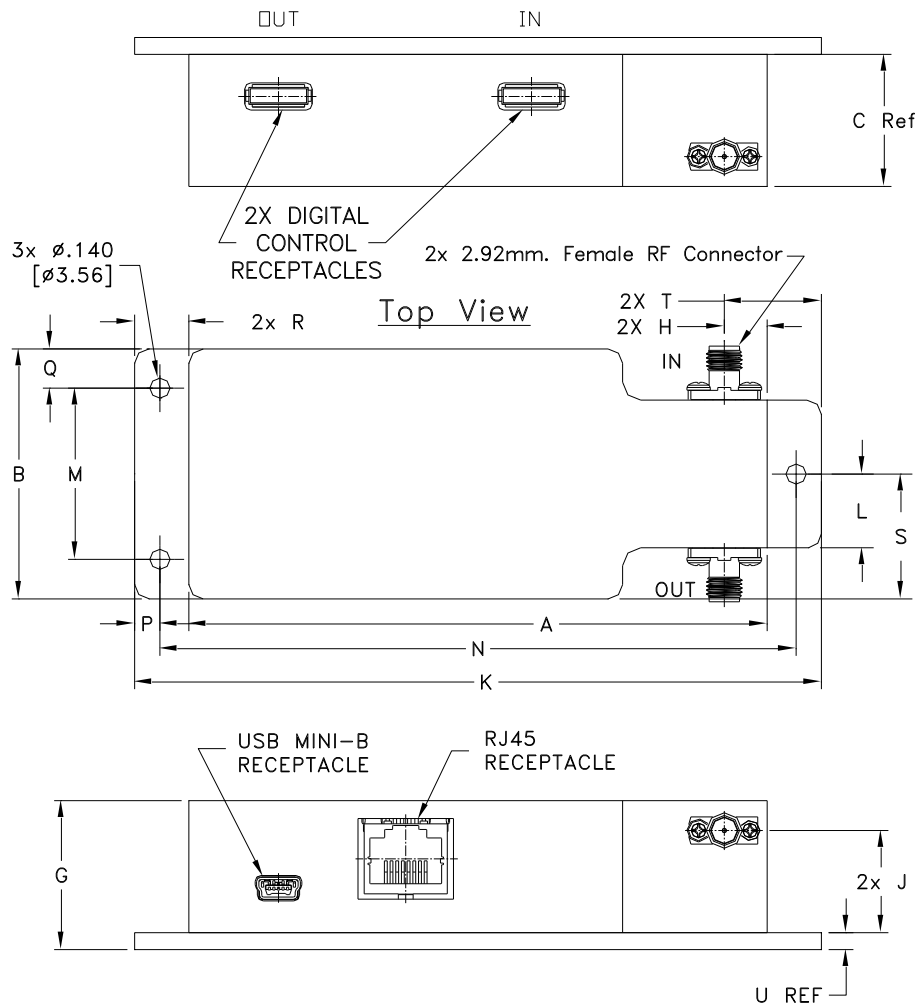


## Outline Dimensions

MS2523



CASE#	A	B	C	D	E	F	G	H	J	K	L	M	N
MS2523	4.00 (101.60)	1.75 (44.45)	.92 (23.49)	-- --	-- --	-- --	1.04 (26.49)	.30 (7.54)	.72 (18.19)	4.75 (120.65)	.52 (13.11)	1.20 (30.45)	4.40 (111.76)

CASE#	P	Q	R	S	T	U	WT. GRAMS
MS2523	.18 (4.45)	.28 (6.99)	.38 (9.53)	0.87 (22.20)	.67 (17.06)	.12 (3.00)	520

Dimensions are in inches (mm). Tolerances: 2PL. +/- .03; 3PL. +/- .015

### Notes:

1. Case material: Brass Alloy.
2. Finish: Tri-metal.



P.O. Box 350166, Brooklyn, New York 11235-0003 (718) 934-4500 Fax (718) 332-4661 For detailed performance specs & shopping online see Mini-Circuits web site



The Design Engineers Search Engine Provides ACTUAL Data Instantly From MINI-CIRCUITS At: [www.minicircuits.com](http://www.minicircuits.com)

RF/IF MICROWAVE COMPONENTS