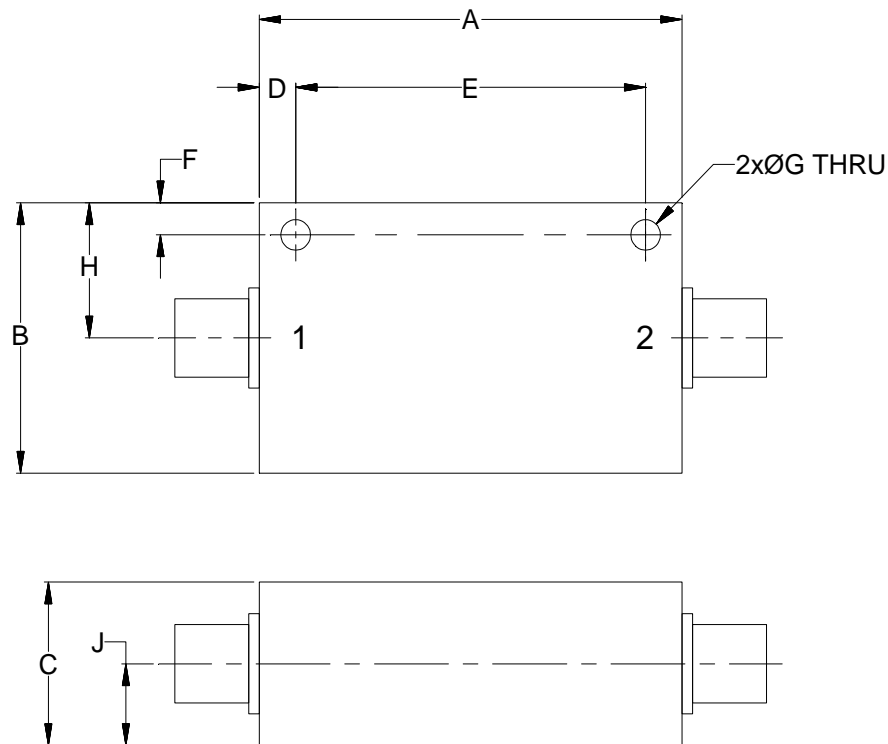


Outline Dimensions

FM587-1



CASE #.	A	B	C	D	E	F	G	H	J	WT, GRAM
FM587-1	2.00 (50.80)	1.24 (31.50)	.75 (19.05)	.17 (4.32)	1.656 (42.06)	.15 (3.81)	.140 (3.56)	.62 (15.75)	.38 (9.65)	57

Dimensions are in inches (mm). Tolerances: 2Pl. $\pm .03$; 3Pl. $\pm .015$

Notes:

1. Case material: Aluminum alloy.
2. Case finish:
For RoHS Case Styles: Clear chemical conversion coating, non-chrome or trivalent chrome based.
3. Refer to the individual model datasheet for the type of connectors available.

Mini-Circuits®
ISO 9001 ISO 14001 CERTIFIED

ALL NEW
minicircuits.com

P.O. Box 350166, Brooklyn, New York 11235-0003 (718) 934-4500 Fax (718) 332-4661 For detailed performance specs & shopping online see Mini-Circuits web site



The Design Engineers Search Engine Provides ACTUAL Data Instantly From MINI-CIRCUITS At: www.minicircuits.com

RF/IF MICROWAVE COMPONENTS